



Bass Coast Health Board of Directors

Chief Executive Officer
Jan Child

Community Advisory Committee

Support Services Director
Lynne Winterburn

Environmental Services

Food Services

Partnerships & Engagement Director
Kristen Yates-Matthews

Community Relations
Steve Fuery

Sub Regional Prevention
Beth Allan

Sub - Regional Partnerships

Facilities Director
Wimal Kirinde

Executive Assistant to the CEO /
Board Secretary & EA Team
Emelia Potts

**Executive Director - Primary
and Community Clinical
Services**
Kirsten Weinzierl (Acting)

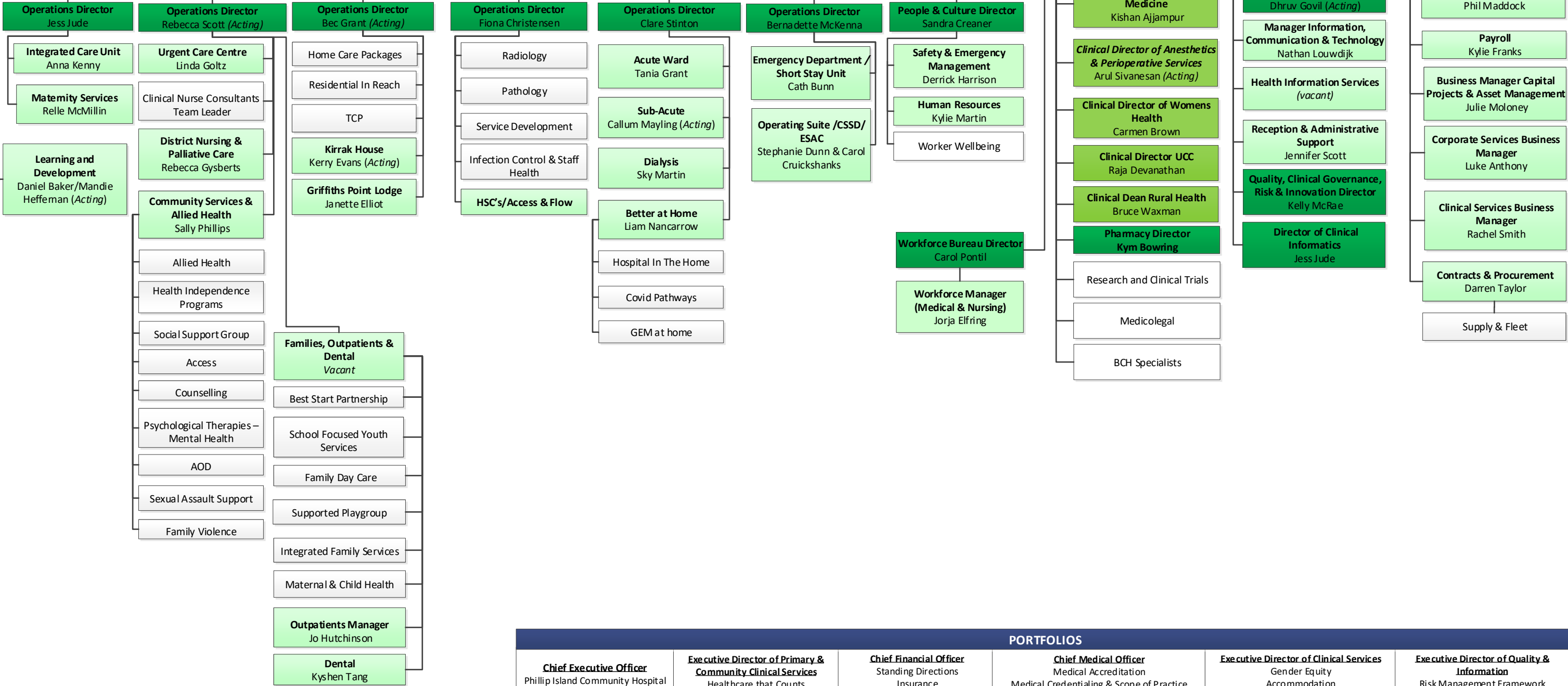
**Executive Director of People
& Culture, & Acute Clinical
Services**
Christine Henderson

PROFESSIONAL REPORTING

Medicine: Renee Kelsall

Nursing and Midwifery: Chris Henderson

Allied Health: Sally Phillips



PORTFOLIOS					
Chief Executive Officer Phillip Island Community Hospital Wonthaggi Hospital Expansion Inclusion & Diversity Fundraising Health Literacy Community Advisory Committee Space Security Environmental Sustainability	Executive Director of Primary & Community Clinical Services Healthcare that Counts My Aged Care Responsible Person (Family Day Care)	Chief Financial Officer Standing Directions Insurance HSV/Procurement	Chief Medical Officer Medical Accreditation Medical Credentialing & Scope of Practice New Technology Medico Legal End of Life/ACP/VAD Research Medical Indemnity Clinical Governance	Executive Director of Clinical Services Gender Equity Accommodation	Executive Director of Quality & Information Risk Management Framework Legislative Compliance My Health Record Freedom of Information Privacy Accreditation/Standards Including: - Child Safe Standards - Victims of Crime National Disability Insurance Scheme (NDIS)