



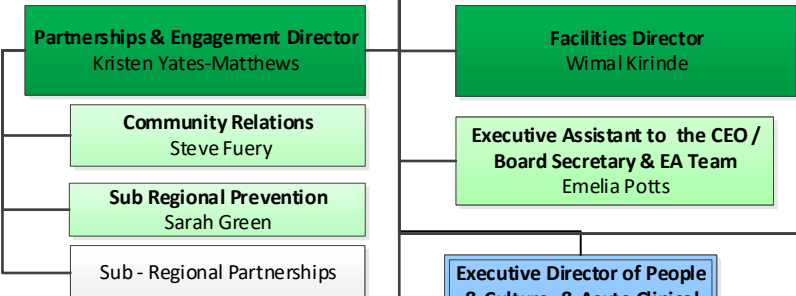
Bass Coast Health Board of Directors

Chief Executive Officer
Jan Child

Community Advisory Committee

PROFESSIONAL REPORTING

Medicine: Renee Kelsall
Nursing and Midwifery: Chris Henderson
Allied Health: Trish Jelbart



Executive Director - Primary and Community Clinical Services
Kirsten Weinzierl (on leave)

Executive Director of People & Culture, & Acute Clinical Services
Christine Henderson

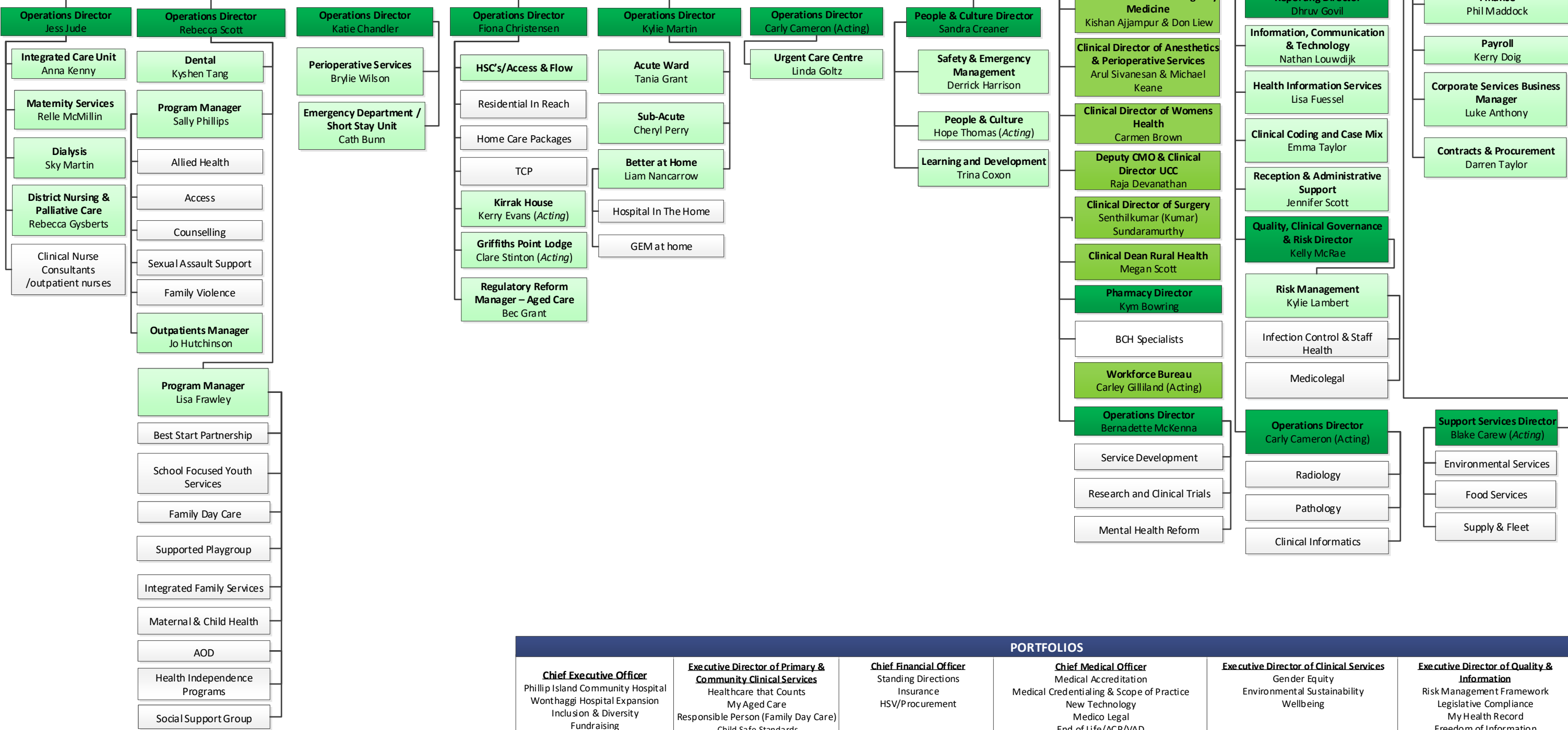
Clinical Services Business Manager
Rachel Smith

Chief Medical Officer
Renee Kelsall

Executive Director of Quality, Health Information & Technology
Emilia Pezzi

Chief Financial Officer
Shaun Brooks

Allied Health Director
Trish Jelbart



PORTFOLIOS					
<p>Chief Executive Officer</p> <ul style="list-style-type: none"> Phillip Island Community Hospital Wonthaggi Hospital Expansion Inclusion & Diversity Fundraising Community Advisory Committee Space Security 	<p>Executive Director of Primary & Community Clinical Services</p> <ul style="list-style-type: none"> Healthcare that Counts My Aged Care Responsible Person (Family Day Care) Child Safe Standards 	<p>Chief Financial Officer</p> <ul style="list-style-type: none"> Standing Directions Insurance HSV/Procurement 	<p>Chief Medical Officer</p> <ul style="list-style-type: none"> Medical Accreditation Medical Credentialing & Scope of Practice New Technology Medico Legal End of Life/ACP/VAD Research Medical Indemnity Clinical Governance Accommodation 	<p>Executive Director of Clinical Services</p> <ul style="list-style-type: none"> Gender Equity Environmental Sustainability Wellbeing 	<p>Executive Director of Quality & Information</p> <ul style="list-style-type: none"> Risk Management Framework Legislative Compliance My Health Record Freedom of Information Privacy Accreditation/Standards Including: <ul style="list-style-type: none"> - Victims of Crime National Disability Insurance Scheme (NDIS)