

# Care like no other, for all cancers

McGrath Cancer Care Nurses provide expert nursing care and support to people experiencing any type of cancer, and their support network. For free. Right across Australia.

## We're there when you need us most

McGrath Cancer Care Nurses are here to support people experiencing cancer, and their support network, throughout treatment.

For 20 years, we've supported over 161,000 families and made a proven, positive difference to the lives of people going through cancer.

And we've become experts in care.

Now, we're taking our one-of-a-kind cancer nursing care to people with any type of cancer.

**Because no one should go through cancer without care.**

## Our Model of Care

McGrath Cancer Care Nurses are guided by the McGrath Model of Care, a framework for delivering best practice cancer care nursing.

It provides a road map for how care should be delivered to people going through any type of cancer.

We are committed to continuous improvement to ensure the best outcomes for people experiencing cancer and their support networks, and to enhance our service.

### The McGrath Model of Care will:

- Align with evidence-based practice that is guided by the Optimal Care Pathways for cancer care - national guidelines that outline best practice nursing principles.
- Include the voices and experiences of people who have gone through cancer, and their carers.
- Recognise the expertise, existing information and knowledge of other cancer organisations and healthcare professionals.
- Consult and work with a broad range of stakeholders, including people who have had a cancer experience, carers, health professionals, researchers and cancer advocacy groups.
- Be supported by a range of expert clinicians, academics and people with a cancer experience.





# How McGrath Cancer Care Nurses support you

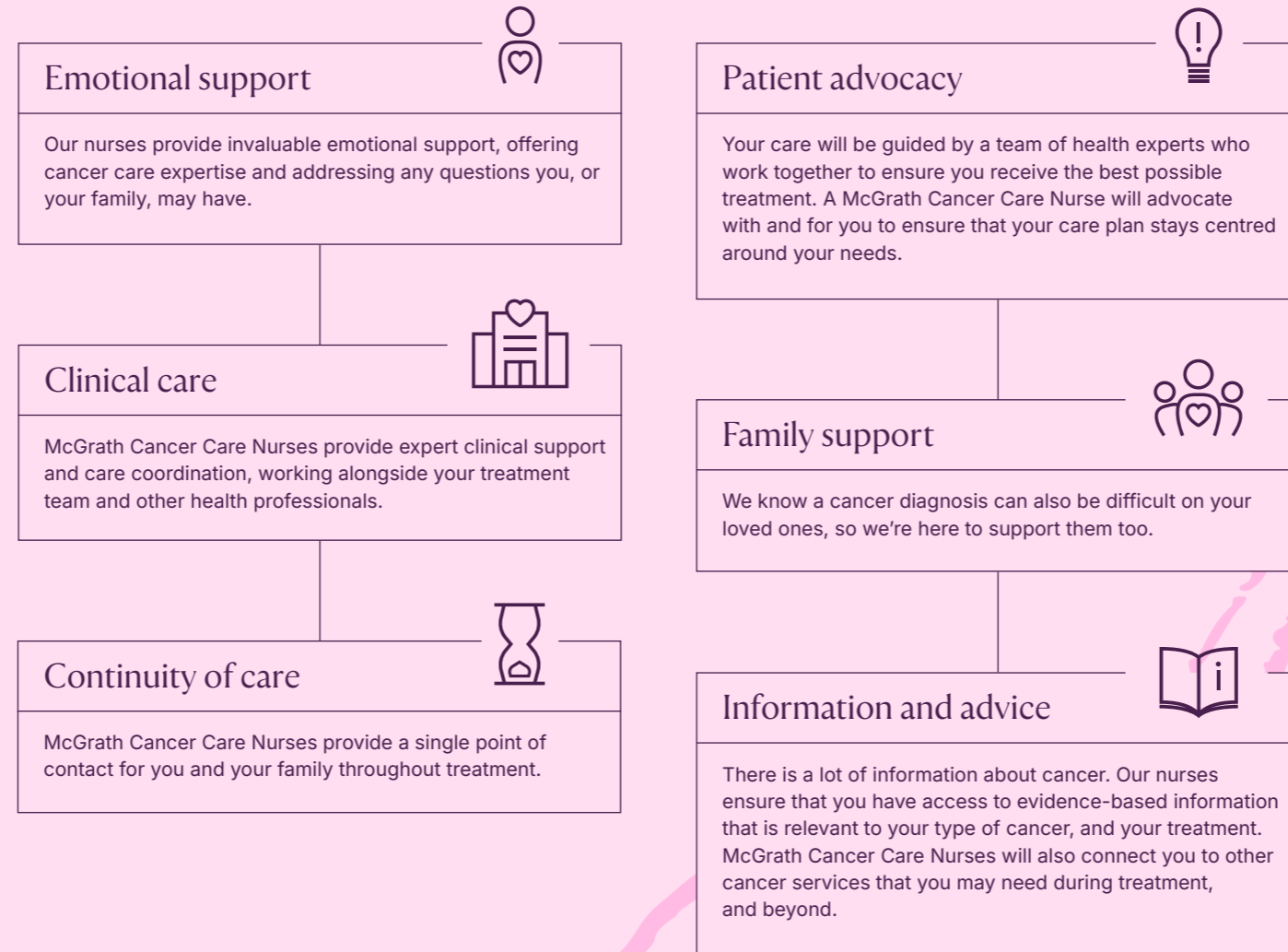
No cancer treatment is without its challenges. McGrath Cancer Care Nurses are here to help.

We know how complex a cancer diagnosis is. Our nurses will help you make informed decisions about your care by providing information and support when you need it most.

A McGrath Cancer Care Nurse will answer your questions and concerns and decrease anxiety by empowering you with knowledge about your diagnosis and treatment.



Here are some of the ways we help care and support you and your loved ones:



## Find a nurse near you

McGrath Cancer Care Nurses provide clinical, psychosocial, practical and emotional support throughout treatment for any type of cancer. Their support is free, and you don't need a doctor's referral. To find a nurse near you, or to be guided to other cancer support services in your area, visit [mcgrathfoundation.com.au/get-support/find-a-nurse](https://mcgrathfoundation.com.au/get-support/find-a-nurse)

☎ : (02) 8962 6100

🌐 : [mcgrathfoundation.com.au/get-support/find-a-nurse](https://mcgrathfoundation.com.au/get-support/find-a-nurse)

**McGrath Foundation**  
76 Berry St, North Sydney NSW 2060